

The Veloscenic Cycle Route, from Versailles to St-Rémy-lès-Chevreuse

La Véloscénie



Départ
Versailles

Arrivée
St-Rémy-lès-Chevreuse

Durée
1 h 37 min

Distance
23,95 Km

Niveau
I begin / Family

After a royal stop in Versailles, head for the Natural Park of the Chevreuse Valley, a regional park with such a rich natural, cultural and architectural heritage. This stage is rather difficult and is suited to seasoned cyclists. You cycle through authentic villages, but the most surprising awaits you on the next stage.

⚠ *This stage lacks some signs and maintenance by the local authorities. We advise to print the stage page or to download the GPS tracks.*

The route

On this 17km-long stage, you mainly cycle on bike paths, and from time to time along roads shared with cars, without much traffic. This stage is for cyclists who are fit, as you have to tackle some tricky slopes (especially in Loges-en-Josas).

Pay attention passing on the D195 in Magny-les-Hameaux, because of dense traffic (70km/h - in red on the map). A bike lane will be built in the future.

Between Magny-les-Hameaux and Saint Rémy-lès-Chevreuse, pay attention to the Chemin de la Butte aux Buis which is a steep slope with stairs, we advise to continue by foot. Improvement to come.

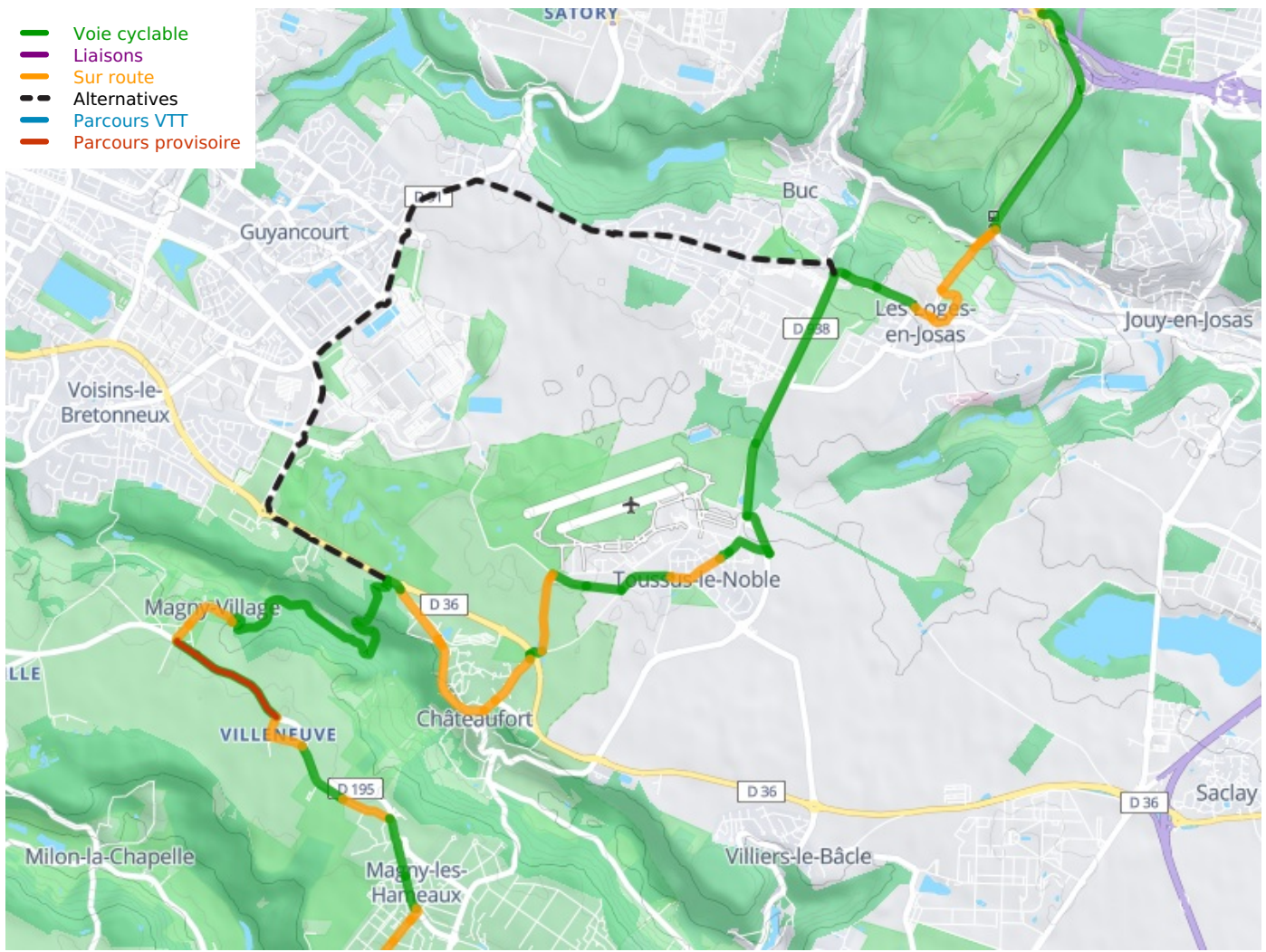
SNCF train services

Rapid rail RER C train station at Versailles Rive Gauche
Rapid rail RER C train station and Transilien regional train station at Versailles Chantiers
Transilien regional train station at Versailles Rive Droite
Rapid rail RER B train station at Saint-Rémy-lès-Chevreuse

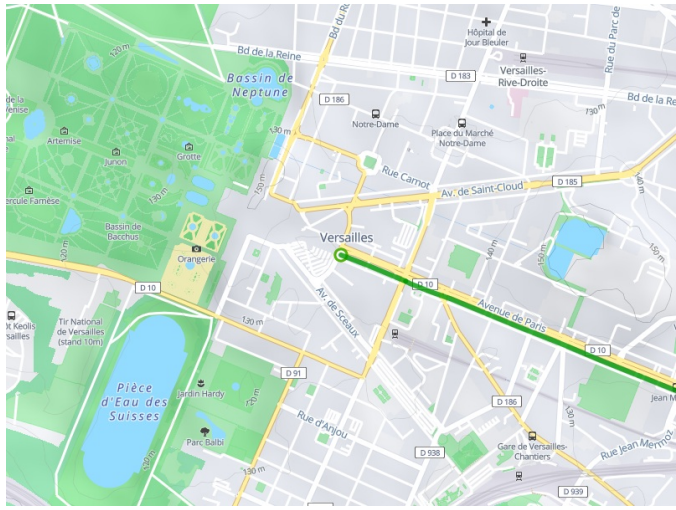
Tourist Information

- [Versailles Tourist Office - \(Label Accueil Vélo\)](#)
- [Saint-Rémy-lès-Chevreuse Tourist Office](#)

- Voie cyclable
- Liaisons
- Sur route
- - - Alternatives
- Parcours VTT
- Parcours provisoire



**Départ
Versailles**



**Arrivée
St-Rémy-lès-Chevreuse**

