

St-Rémy-lès-Chevreuse / Rambouillet

Veloscenic : Paris to Mont-Saint-Michel cycle route

□

Départ
St-Rémy-les-Chevreuse

Arrivée
Rambouillet

Durée
1 h 54 min

Distance
28,58 Km

Niveau
I begin / Family

Thématique
Variante par Versailles

Here you discover the Chevreuse Valley, full of many treasures: châteaux, museums, old wash houses... This stage, before arriving in Rambouillet, is packed with things to see, but is more geared to intermediate cyclists, as there are a steep slope in Choisel and traffic is very heavy on two sections. Those who tackle this stage will be rewarded by some beautiful landscapes.

⚠ *This stage lacks some signs and maintenance by the local authorities. We advise to print the stage page or to download the GPS tracks.*

The route

This 26km-long stage takes you along a mixture of ways including cycle paths, country tracks, quiet roads shared with motorized traffic and some major county roads.

Leaving Choisel, **pay attention when you use the RD24 (improvements to come)**.

As you arrive in Rambouillet Forest, the way becomes more tranquil and flat.

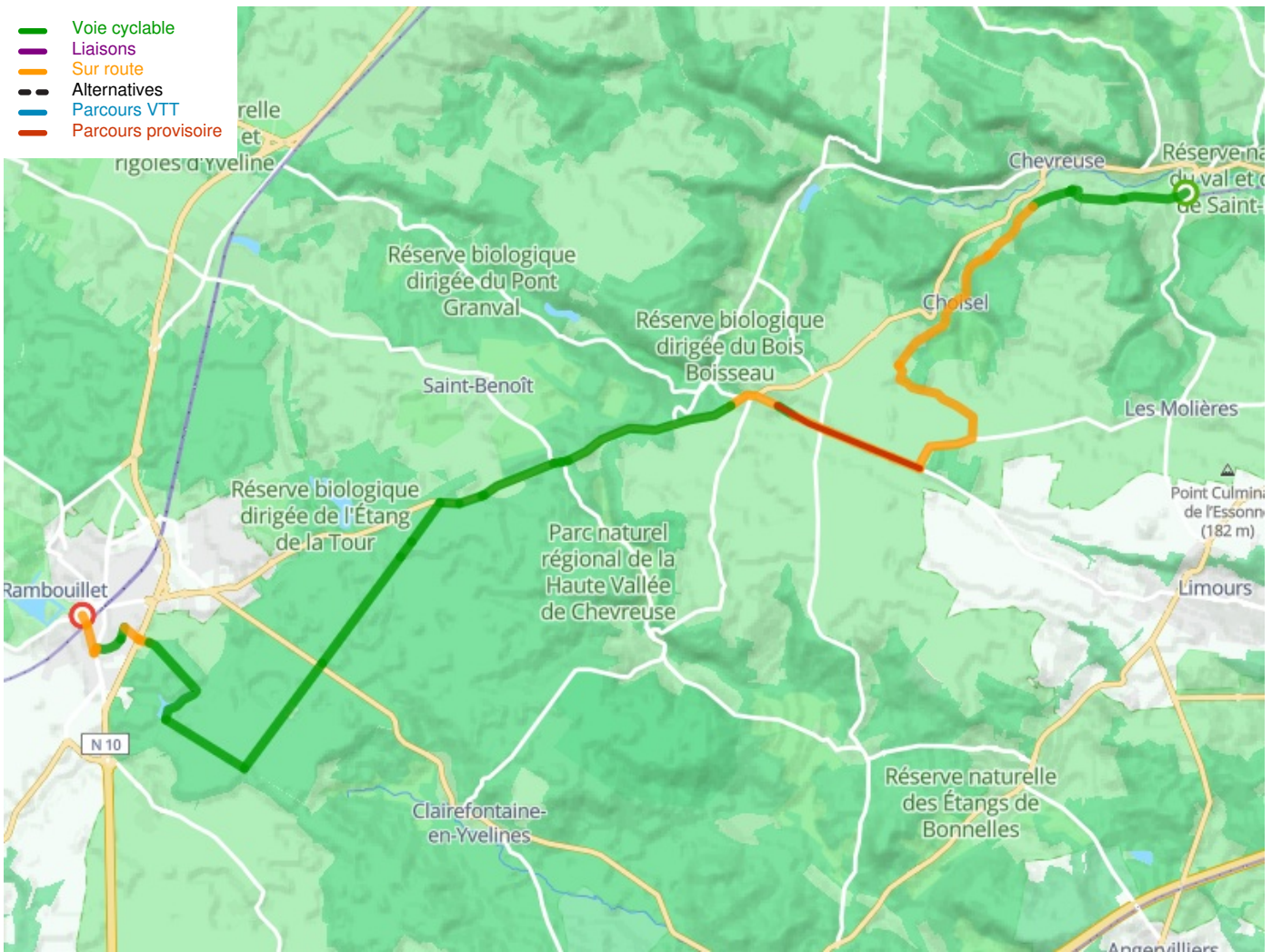
This stage is a bit hilly in parts, but there is nothing that a moderately fit cyclist cannot master.

SNCF

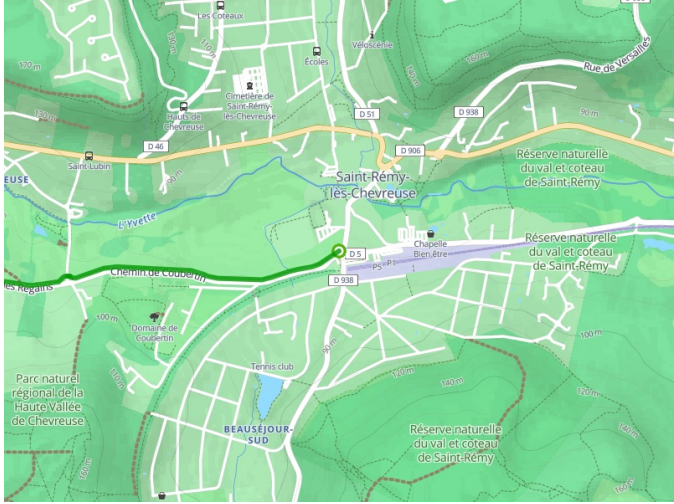
Rapid railway RER B de Saint-Rémy-Lès-Chevreuses
Train station transilien de Rambouillet – ligne Paris / Chartres

Tourism Information Center

- [Office de Tourisme de Saint-Rémy-les-Chevreuse](#)
- [Office de tourisme de Rambouillet et pays d'Yvelines](#)



Départ
St-Rémy-les-Chevreuse



Arrivée
Rambouillet

