

# The Veloscenic Cycle Route, from St-Rémy-lès-Chevreuse to Rambouillet

## Veloscenic : Paris to Mont-Saint-Michel cycle route



Here you discover the Chevreuse Valley, full of many treasures: châteaux, museums, old wash houses... This stage, before arriving in Rambouillet, is packed with things to see, but is more geared to intermediate cyclists, as there are a steep slope in Choisel and traffic is very heavy on two sections. Those who tackle this stage will be rewarded by some beautiful landscapes.

⚠ *This stage lacks some signs and maintenance by the local authorities. We advise to print the stage page or to download the GPS tracks.*

### The route

This 26km-long stage takes you along a mixture of ways including cycle paths, country tracks, quiet roads shared with motorized traffic and some major county roads.

Leaving Choisel, **pay attention when you use the RD24 (improvements to come).**

As you arrive in Rambouillet Forest, the way becomes more tranquil and flat.

This stage is a bit hilly in parts, but there is nothing that a moderately fit cyclist cannot master.

### SNCF

Rapid railway RER B de Saint-Rémy-Lès-Chevreuses  
Train station transilien de Rambouillet - ligne Paris / Chartres

### Tourism Information Center

- [Office de Tourisme de Saint-Rémy-les-Chevreuse](#)
- [Office de tourisme de Rambouillet et pays d'Yvelines](#)

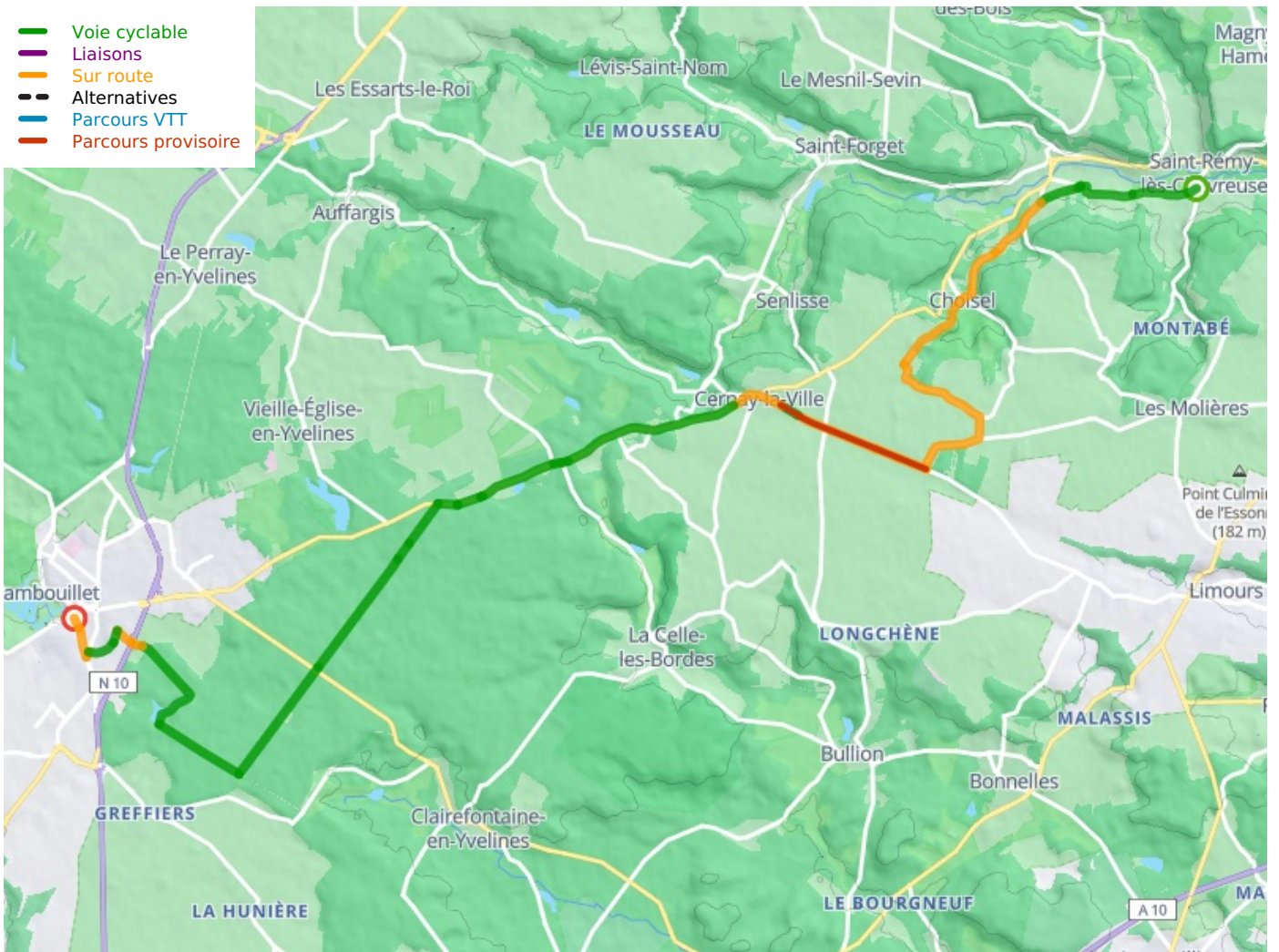
**Départ**  
St-Rémy-les-Chevreuse

**Arrivée**  
Rambouillet

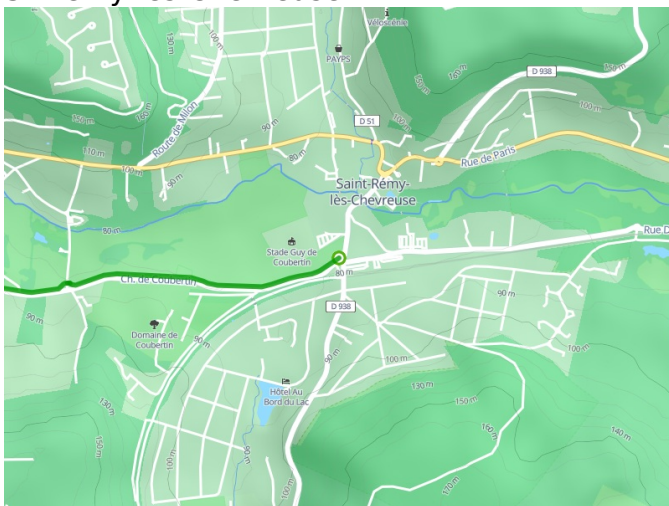
**Durée**  
1 h 54 min

**Distance**  
28,58 Km

**Niveau**  
I begin / Family



**Départ**  
St-Rémy-les-Chevreuse



**Arrivée**  
Rambouillet

